



# GMT MONTHLY MEMBERSHIP PROGRESS REPORT

Results as of: 8/31/2017

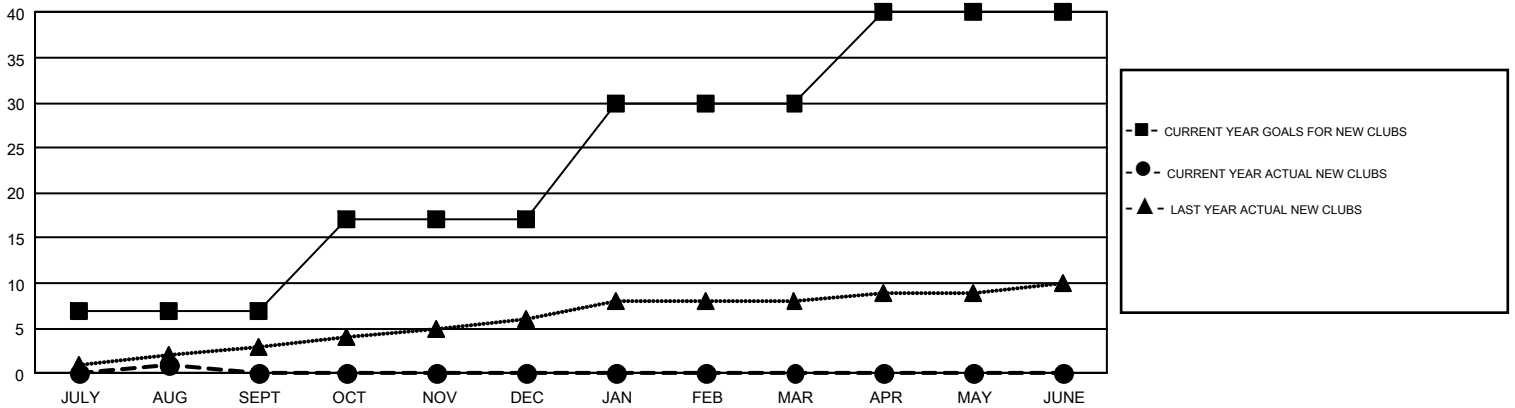
## GMT Constitutional Area 1, Group D

GMT: MICHAEL MOLEND

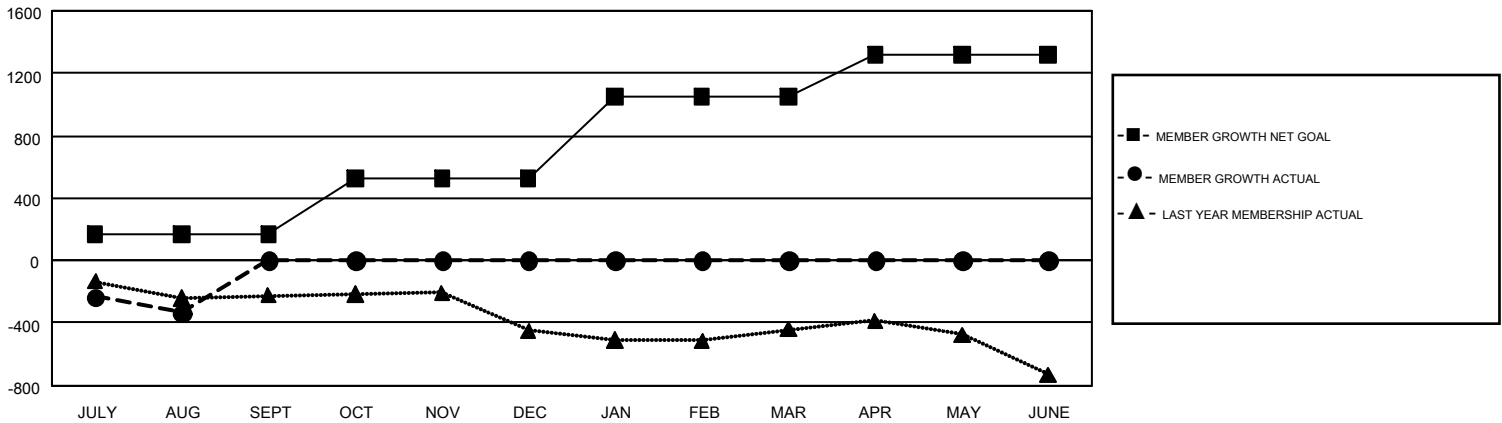
REPORT DOES NOT INCLUDE CLUBS IN UNDISTRICTED AREAS.

Clubs				Members			
RESULTS FOR 2017-2018				RESULTS FOR 2017-2018			
QUARTER	NEW CLUB GOAL	NEW CLUBS	DROPPED CLUBS	QUARTER	MEMBER GROWTH NET GOAL	MEMBER GROWTH ACTUAL	DROPPED MEMBERS ACTUAL (including transfers)
JULY/AUG/SEPT	7	1	5	JULY/AUG/SEPT	169	520	854
OCT/NOV/DEC	10	0	0	OCT/NOV/DEC	355	0	0
JAN/FEB/MAR	13	0	0	JAN/FEB/MAR	528	0	0
APR/MAY/JUNE	10	0	0	APR/MAY/JUNE	266	0	0

GOALS AND ACTUAL NEW CLUBS CUMULATIVE



GOALS AND ACTUAL MEMBERS CUMULATIVE



DROPPED CLUBS: 5	270 CLUBS OF 1,528 ADDED 1 OR MORE NEW MEMBERS	<b>GENDER DISTRIBUTION</b> MALE 36,030 (74.76%) FEMALE 12,162 (25.24%)
<b>DROPPED MEMBERS</b> DECEASED 98 CLUB CANCELLED 0 OTHER 756 <b>TOTAL 854</b>	<a href="#">CLICK HERE FOR CUMULATIVE MEMBERSHIP DATA</a>	TOTAL FAMILY UNIT MEMBERS 9,252 FAMILY MEMBERS PAYING HALF DUES 4,696